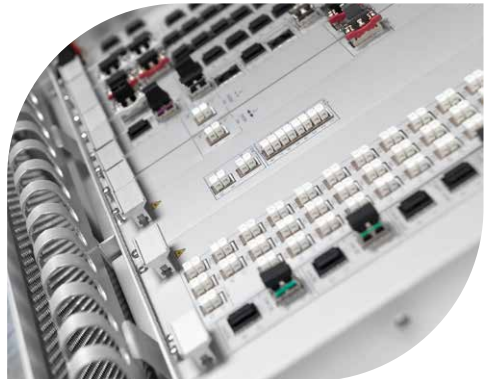
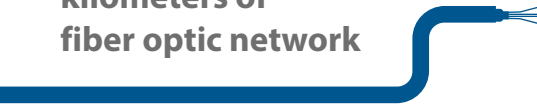


Broadband

Protected – Redundant – Fail-safe.

With **almost 30 years of experience** in marketing fiber optic capacities, we are a reliable and high-performing partner when it comes to setting up tailor-made data networks. All in all, we currently holds a constant portfolio of **more than 8,500 kilometres** of fiber optic network infrastructure for lease. Besides leasing dark fiber capacities (“Dark Fiber”), we also offers broadband connections. This wavelength runs between defined end points and is excellently suited for the development of rural regions in the belt of our **network infrastructure**. Additionally, we have spaces for lease in our telecommunications containers.

8,500
kilometers of
fiber optic network



Our offer

- **Wavelength Division Multiplex (WDM)** connections available through Ethernet customer interfaces
- WDM providing bit rates of up to **1 to 100 Gbit/s**
- Scalable bandwidths on request
- WDM network based on an **underground fiber optic infrastructure** laid within the safety zone of a gas pipeline
- System monitoring of all network components carried out by our
- Customer Service Center (CSC), **24/7 reachability** and **short repair time** thanks to our own spare parts stock
- Dedicated broadband connections to supply customers in rural areas expanding from our backbone to the nearest computing centre or **point of presence (PoP)** of a local Internet service provider, a Telecommunications service provider or municipal utilities
- Handover in the major German collocation points (e.g. Interxion in Frankfurt/Main and Dusseldorf)
- **Technical support** provided by our experts when it comes to planning, implementation and maintenance

Broadband parameters

- Products ranging from **1 to 100 Gbit/s**
- Scalable in 1-Gbit steps
- Ethernet customer interfaces with a variety of wavelengths (e.g. 850 nm MM, LC/PC)
- **Low latency** due to point-to-point connections (no dynamic routing)
- Repair time for system technology **< 8 hours**
- **High availability** thanks to reputable system suppliers and a nationwide fault clearance service

We would be pleased to send detailed maps of route sections to you on request.

Learn more?



WINGAS GmbH

Königstor 20 | 34117 Kassel
Phone: +49 (0) 561 99858-1446
E-mail: info_lwl@wingas.de
www.wingas-lwl.de

Version: January 2024

